

G - 30.1 b

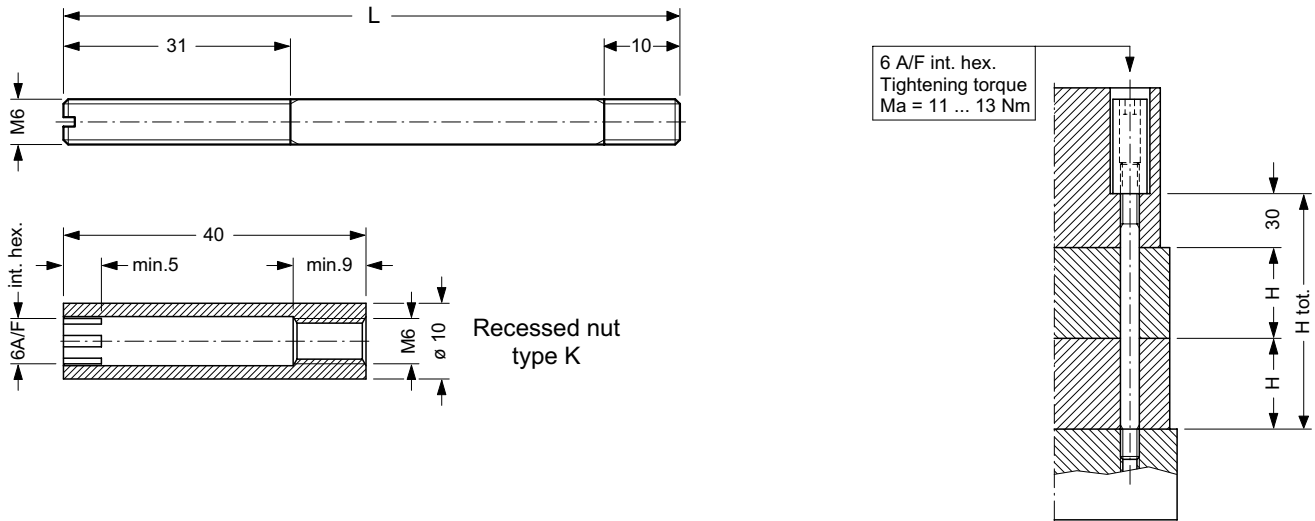
Fixing Kits

for size 5 Modular Stacks

with directional valves WEVDE.. / WEDE..
WEDEU.. / WOFA..

- Steel stud db min. 1000 n/mm², phosphated
- kompakte Einschraub-Patrone

DIMENSIONS



L	124	146	161	183	198	220	245	270	295
H tot.	90 .. 105	106 .. 128	121 .. 142	143 .. 165	158 .. 179	180 .. 204	205 .. 229	230 .. 254	255 .. 280
Part.-Nr.:	K6124	K6146	K6161	K6183	K6198	K6220	K6245	K6270	K6295

Overview of cap screws / studs required

1 Directional valve
+ plus:

	No. of modules with height H = 37 mm (SRV.. / SAZ.. / SA.. / SWAA.. / SZ-37..)						
	0	1	2	3	4	5	
No. of modules with height H = 50 mm:	0	M6 x 40	M6 x 75	K6124	K6161	K6198	K6245
SWESB.. / EEx-SWESB.. / SDBB.. / SDBB-3.. / SDBB-S.. SDVB.. / SDVB-3.. / SDRB.. / SDRVB-7.. / SDRVRC-7.. SDWDPB-2D.. / SDWVPB-2.. / SDWDPB-5D.. / SDVPRA-3.. SDRPRA-5.. / SNSA.. / SRDB.. / SM-2D.. / SREZ..	1	M6 x 90	K6146	K6183	K6220	K6245	
	2	K6161	K6198	K6220	K6270		
	3	K6220	K6245	K6270			
	4	K6270					

MODEL CODE KEY

4 Studs complete with nuts

Recessed nut type K

M6 threads

Stud length L (mm)

Ex. 1 Stud kit K 6 146

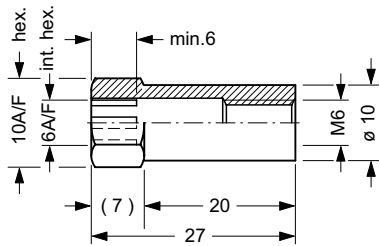
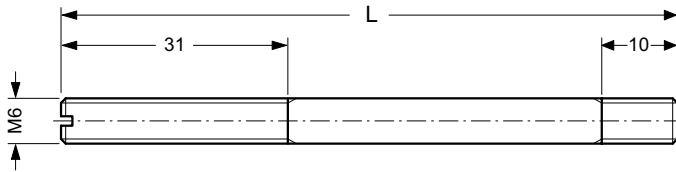
Fixing Kits

for size 5 Modular Stacks

with directional valves EEx-WEV..
EExdWEV.. / WVRA..

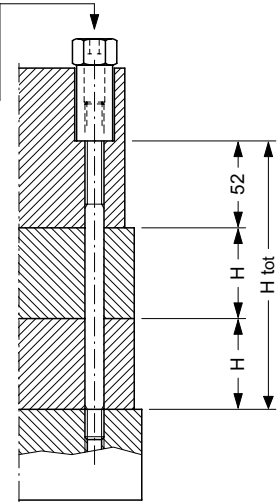
- Steel stud, δb min. 1000 N/mm², phosphated
- Recessed nut, steel, phosphated

DIMENSIONS



Recessed nut type B

10 A/F hex. and
6 A/F int. hex.
Tightening torque
Ma = 11 ... 13 Nm



L	124	146	161	183	198	220	245	270	295
H tot.	90 .. 105	106 .. 128	121 .. 142	143 .. 165	158 .. 179	180 .. 204	205 .. 229	230 .. 254	255 .. 280
Part.-Nr.:	B6124	B6146	B6161	B6183	B6198	B6220	B6245	B6270	B6295

Overview of cap screws / studs required

1 Directional valve
+ plus:

		No. of modules with height H = 37 mm (SRV.. / SAZ.. / SA.. / SWAA.. / SZ-37..)					
		0	1	2	3	4	5
No. of modules with height H = 50 mm:	0	M6 x 60	M6 x 95 or B6124	B6146 or B6161	B6183 or B6198	B6220	B6270
SWESB.. / EEx-SWESB.. / Sddb.. / Sddb-3.. / Sddb-S.. SDVB.. / SDVB-3.. / SDRB.. / SDRVB-7.. / SDRVRC-7.. SDWDPB-2D.. / SDWVPB-2.. / SDWDPB-5D.. / SDVPRA-3.. SDRPRA-5.. / SNSA.. / SRDB.. / SM-2D.. / SREZ..	1	B6124	B6161	B6198	B6245	B6270	
	2	B6183	B6220	B6245	B6295		
	3	B6220	B6270	B6295			
	4	B6270					

MODEL CODE KEY

Ex. 1 Stud kit B 6 146

- 4 Studs complete with nuts
- Recessed nut type B
- M6 threads
- Stud length L (mm)

info.ch@bucherhydraulics.com

www.bucherhydraulics.com

© 2015 by Bucher Hydraulics AG Frutigen, CH-3714 Frutigen

All rights reserved.

Data is provided for the purpose of product description only, and must not be construed as warranted characteristics in the legal sense. The information does not relieve users from the duty of conducting their own evaluations and tests. Because the products are subject to continual improvement, we reserve the right to amend the product specifications contained in this catalogue.